



PORT
— *de La* —
MER
LA SIRÈNE

LIVE ON THE HORIZON

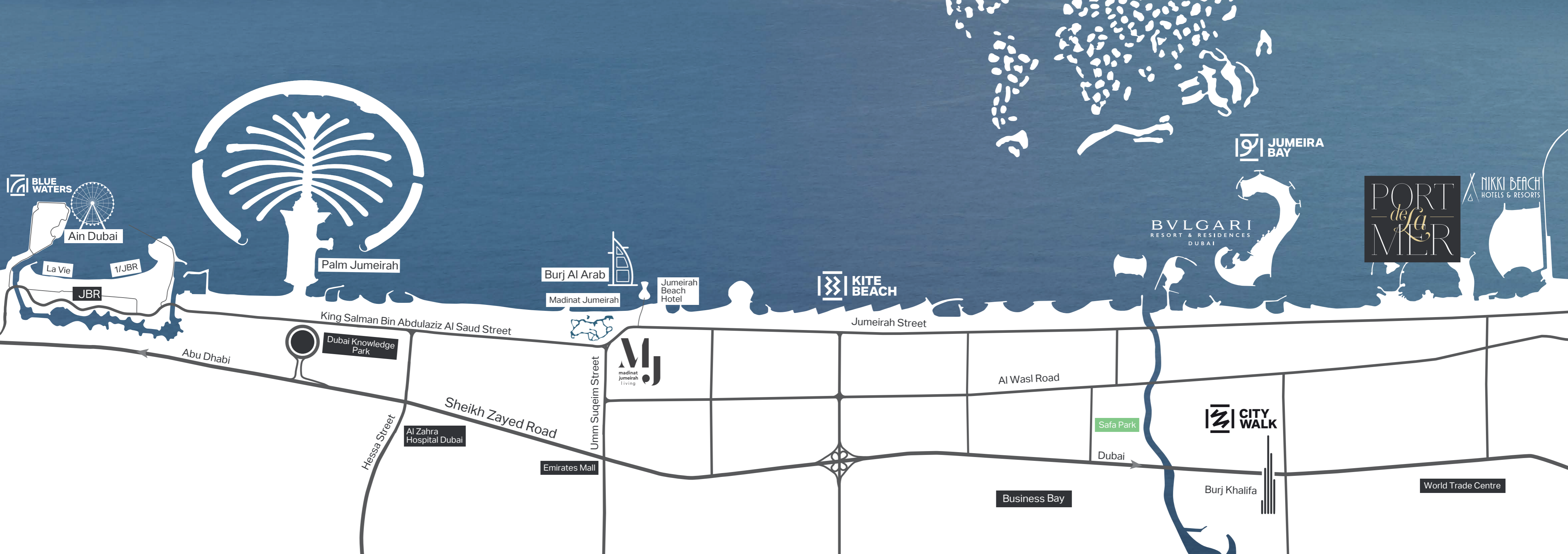


Settling down in Port de La Mer will change more than just where you live. It will change how you live. The glimmering sea, pristine beach, a buzzing marina within a picturesque community are more than enough to inspire you to get up every morning and ask yourself - what lies on the horizon today?

MERAAS

Our sophisticated design aims to connect diverse personalities who have a vast variety of preferences, at some of Dubai's most sought-after addresses. From cutting-edge waterfront properties to contemporary family-friendly communities, our residences at iconic locations such as City Walk, Bluewaters, Jumeira Bay, Pearl Jumeira, and La Mer stimulate a creative and cutting-edge culture. Meraas' continuing investment in innovation is ensuring a better, more prosperous future for generations to come.





BLUE WATERS
Ain Dubai
 La Vie
 1/JBR
JBR

Palm Jumeirah

Burj Al Arab
 Madinat Jumeirah
 Jumeirah Beach Hotel

KITE BEACH

JUMEIRA BAY

BVLGARI
 RESORT & RESIDENCES
 DUBAI

PORT de la MER

NIKKI BEACH
 HOTELS & RESORTS

Abu Dhabi
 King Salman Bin Abdulaziz Al Saud Street

Dubai Knowledge Park

Hessa Street
 Sheikh Zayed Road
 Al Zahra Hospital Dubai

Emirates Mall

Umm Suqeim Street
MJ
 madinat jumeirah living

Jumeirah Street

Al Wasl Road

Safa Park

Dubai

CITY WALK

Business Bay

Burj Khalifa

World Trade Centre



LA MER

Set within the prestigious Jumeirah 1 district, La Mer is an inspirational beachfront destination. With fresh contemporary design, it boasts premium dining, shopping, entertainment, leisure and hospitality experiences along 2.5 kilometres of pristine beaches.

The residential communities here benefit from excellent connectivity to the city's most popular attractions, and easy accessibility to Dubai's international airports.

CONNECTIVITY

Port de La Mer is easily accessible from all major road links. Located within La Mer and only minutes away from City Walk, this seaside destination has everything one could desire within close vicinity. Dubai International Airport is only a short drive away, and for those who enjoy the glitz and glamour of the city, shopping, leisure and dining experiences are also at your doorstep.



5 MINUTES
to La Mer



10 MINUTES
to City Walk



10 MINUTES
to Downtown Dubai



15 MINUTES
to Dubai
International Airport



45 MINUTES
to Al Maktoum
International Airport





PORT DE LA MER

Inspired by the charm of the Mediterranean, Port de La Mer offers panoramic views of the open water and Dubai skyline. The residences blend vintage architecture and contemporary interior design while being surrounded by coastal waters, offering a vibrant yet laid-back seaside life.



AMENITIES

Port de La Mer boasts premium amenities in stunning settings. Its bridges connect the different spaces together, from bustling piazzas to its inviting open spaces, all of which surround its central podium. Restaurants, hotels, and retail outlets along the waterfront further infuse energy and vitality into life at Port de La Mer. Visitors and residents here can indulge in:



+190 Berth Marina
and Yacht Club



5-STAR
Hospitality
Experiences



Magnificent
Swimming Pools



Seaside and Marina
Promenades



Private Landscaped
Terraces



Cafes and
Restaurants

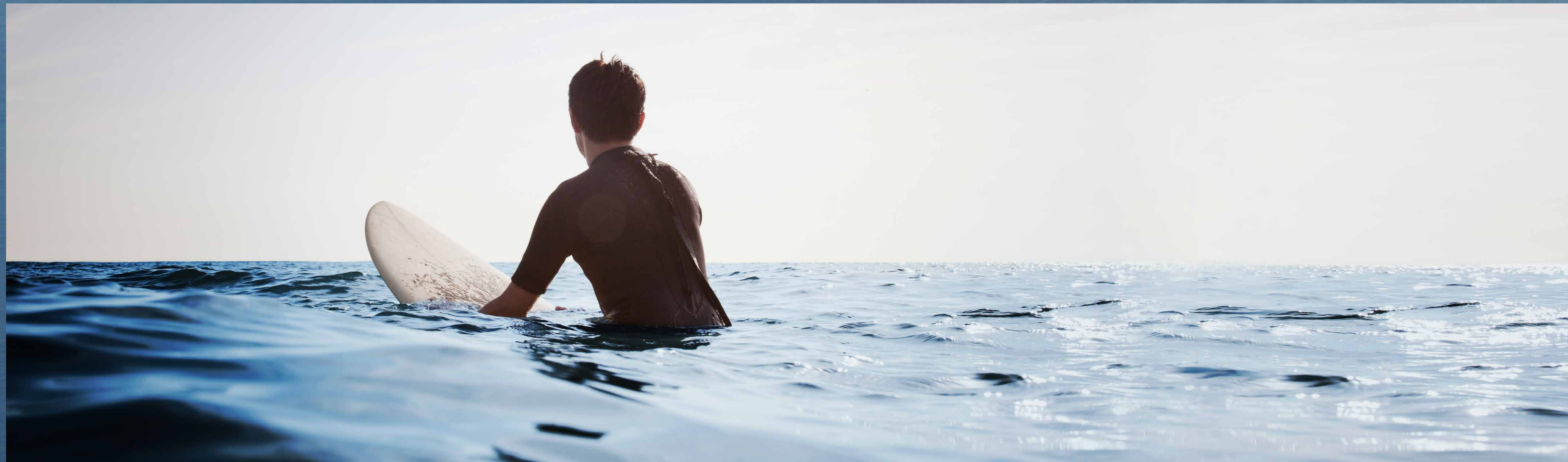


Beach Access



Private Facilities
and Amenities





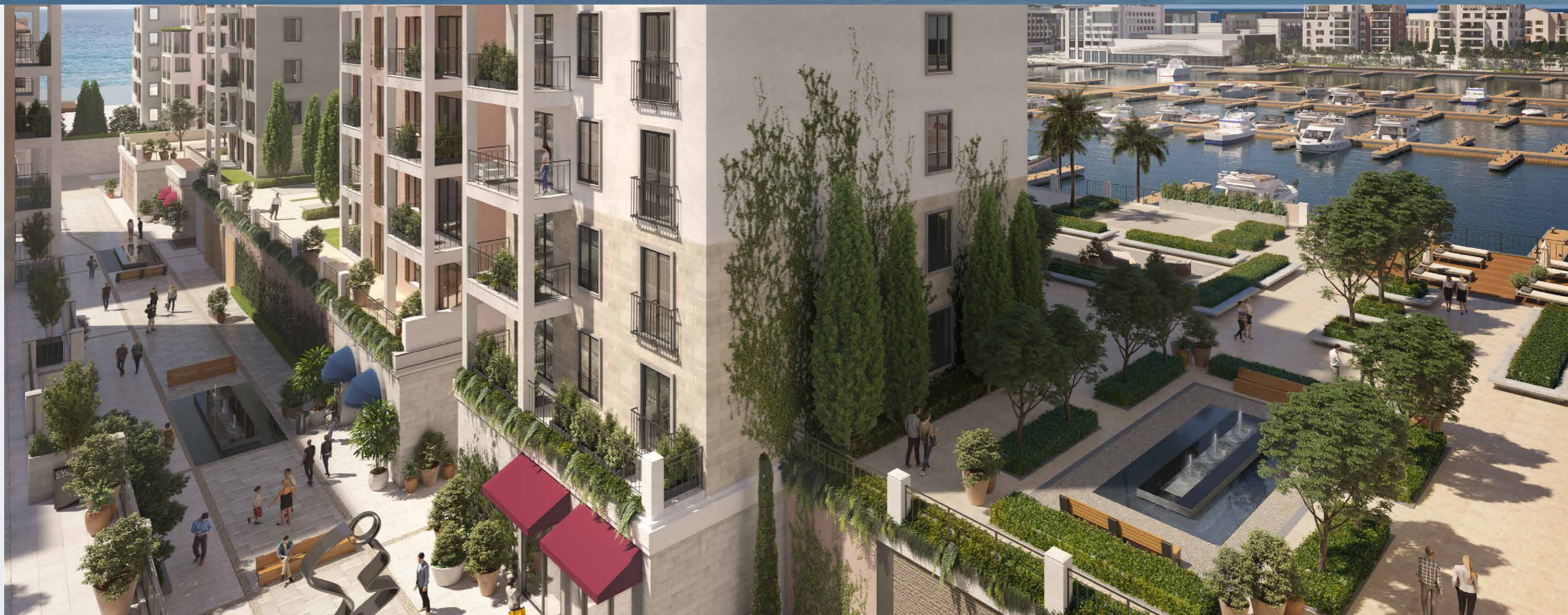


LA SIRÈNE

Live on the edge of Dubai's pristine coastline, embrace a Mediterranean inspired seaside lifestyle and discover there's so much more to life when you keep looking towards the horizon.

The latest addition to Port de La Mer, La Sirène, comprises of an exclusive selection of 1, 2, 3 and 4-bedroom apartments and a 6-bedroom duplex, offering views unlike any other. Savour open seas, beaches, boardwalks, cafes - the more you discover, the more you can imagine and appreciate the endless possibilities of living in La Sirène at Port de La Mer.

**CHARMING
WALKWAYS
CONNECTING
THE COMMUNITY**





**UNIQUE
MARINA
PROMENADE
AND EASY
GOING
LIFESTYLE**

**PREMIUM
AMENITIES
IN STUNNING
SETTINGS BY
THE SEA**







**MEDITERRANEAN
INSPIRED
ARCHITECTURE**

**A ONE-OF-A-
KIND ISLAND
RETREAT
WITHIN THE
CITY**





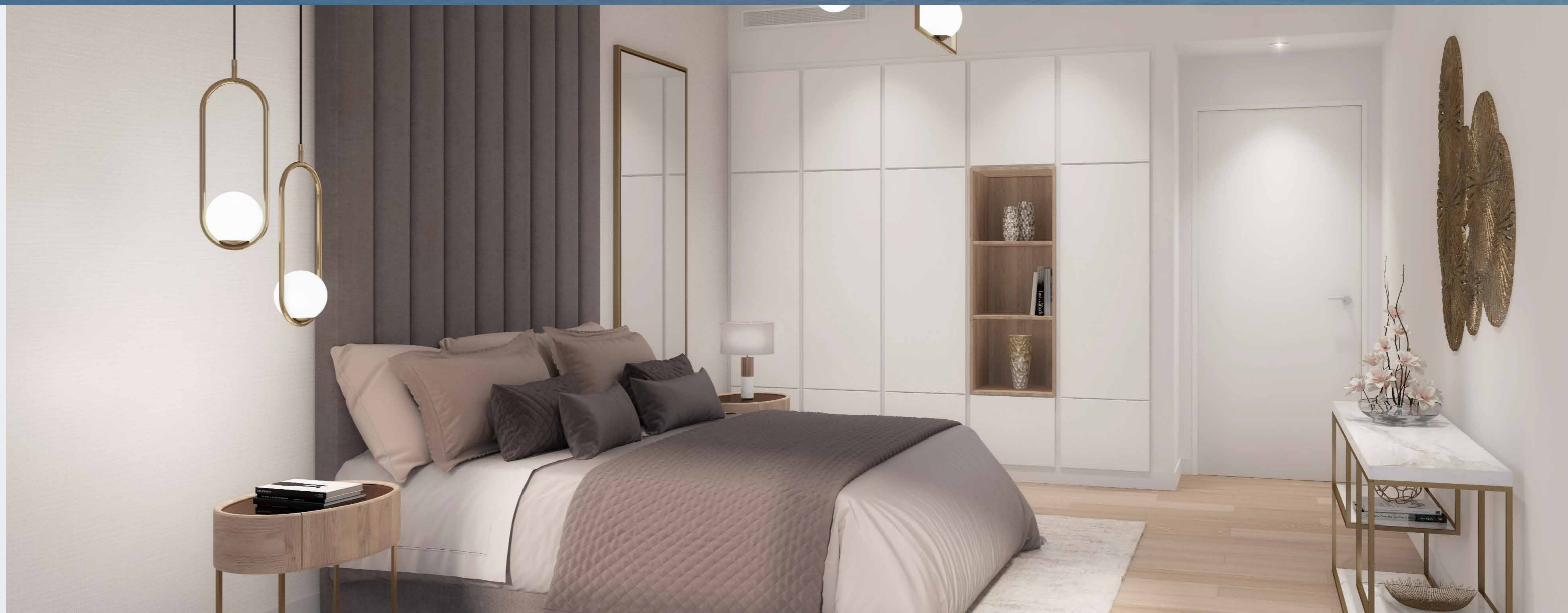
**CUTTING EDGE
FACILITIES
AT YOUR
DOORSTEP**





**FLOWING
INTERIOR
SPACES AND
PRIVATE
QUARTERS**

**MAJESTIC
FINISHES WITH
ATTENTION TO
DETAIL**





**SPACIOUS
LAYOUTS FOR
A WELCOMING
ATMOSPHERE**

MASTER PLAN

LEGEND

- LA COTE
- LA RIVE
- LE PONT
- LA VOILE
- LA SIRENE
- HOTELS
- ▲ LA MER & PDLM ENTRIES
- ▲ BEACH ACCESS
- 1** BEACH
- 2** MARINA
- 3** YACHT CLUB
- 4** SUR LA MER
- 5** LAGUNA WATER PARK
- 6** LA MER BEACH
- 7** RESTAURANTS & RETAIL
- 8** DUBAI MARINE RESORT
- 9** PALM STRIP MALL
- 10** JUMEIRAH MOSQUE
- 11** JUMEIRAH CENTRE
- 12** THE VILLAGE MALL
- 13** JUMEIRAH PLAZA
- 14** CENTURY PLAZA







PORT
— *de La* —
MER
LA SIRÈNE